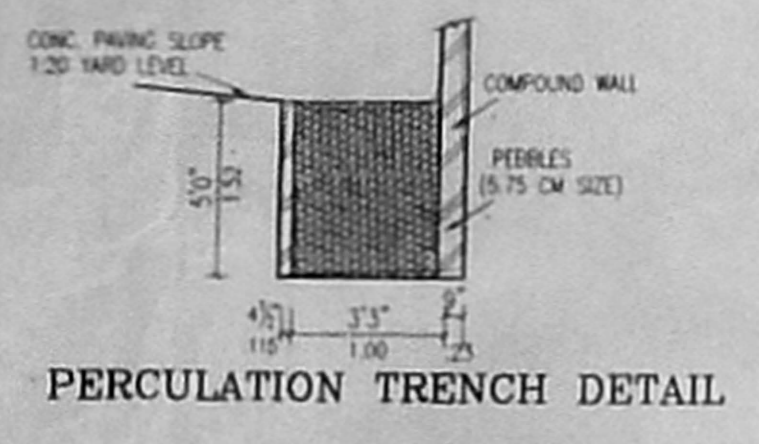


100.5 x 83.5

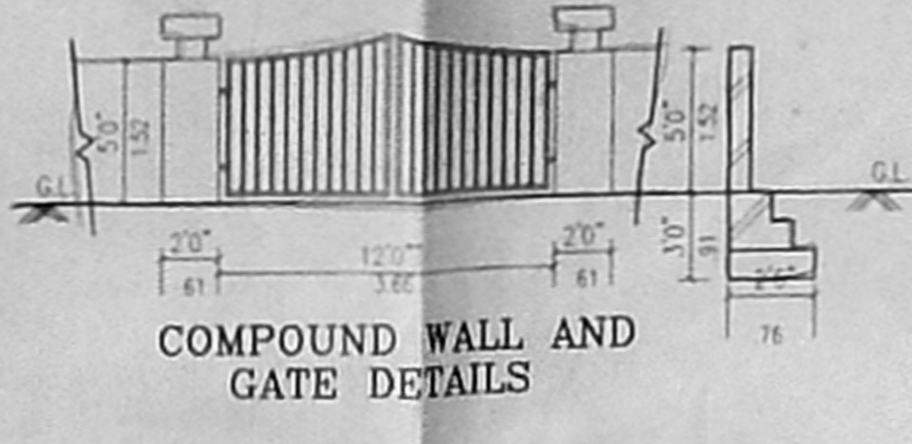
PROPOSED RESIDENTIAL FLATS,
 AT OLD NO: 96, NEW NO: 66,
 ABHIRAMPURAM 4TH STREET,
 R.S.NO: 3709/17,
 BLOCK NO:73, MYLAPORE DIVISION,
 MYLAPORE-TRIPLIKANNALU,
 CHENNAI DISTRICT

Approved
 SUBJECT TO THE CONDITIONS IN
 THIS OFFICE LETTER.
 C.No. 3005/2001
 Date: 2/2/2002
 FOR MEMBER SECRETARY,
 CHENNAI METROPOLITAN
 DEVELOPMENT AUTHORITY
 CHENNAI-600 008.

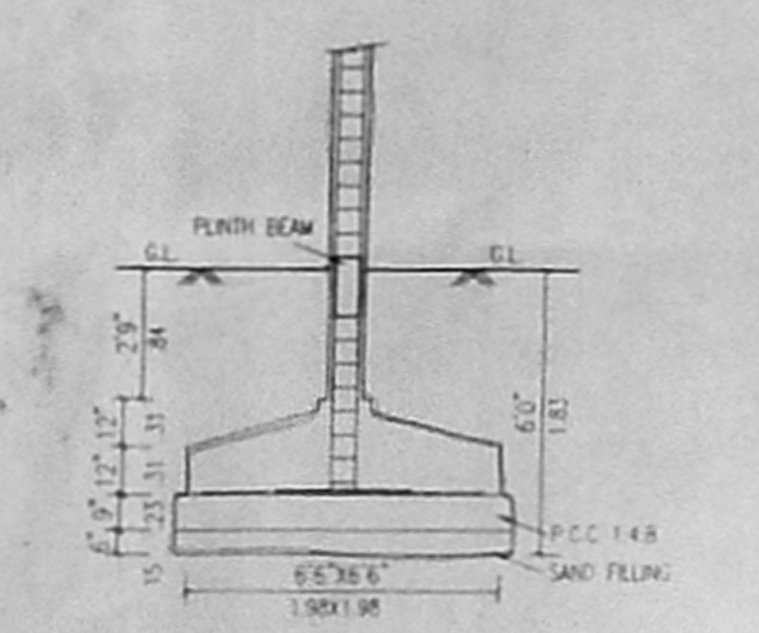
CMDA (B)/No. 1
 C.No. 3005/2001
 Ass: [Signature]
 Scrutiny [Signature]
 Mrs. S. JANAKI
 D.P.



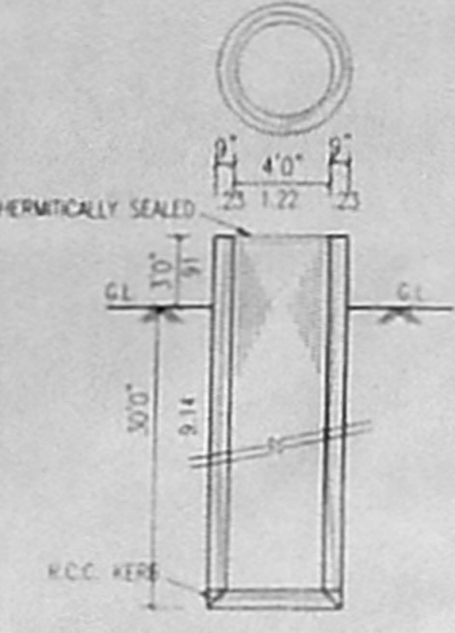
PERCUSSION TRENCH DETAIL



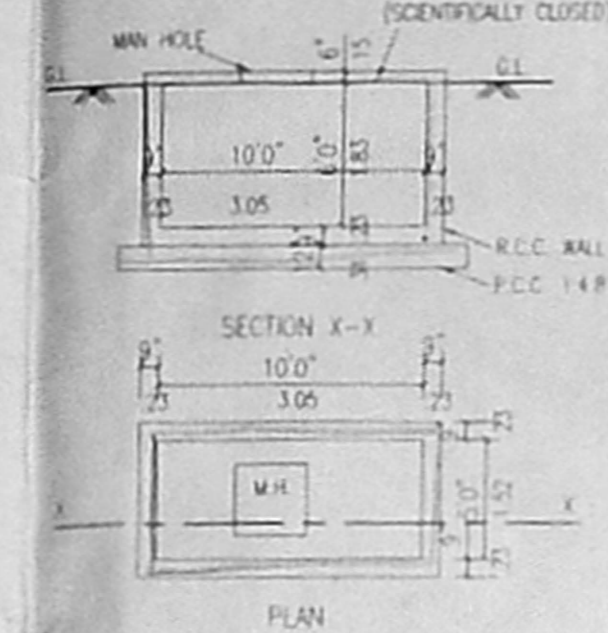
COMPOUND WALL AND GATE DETAILS



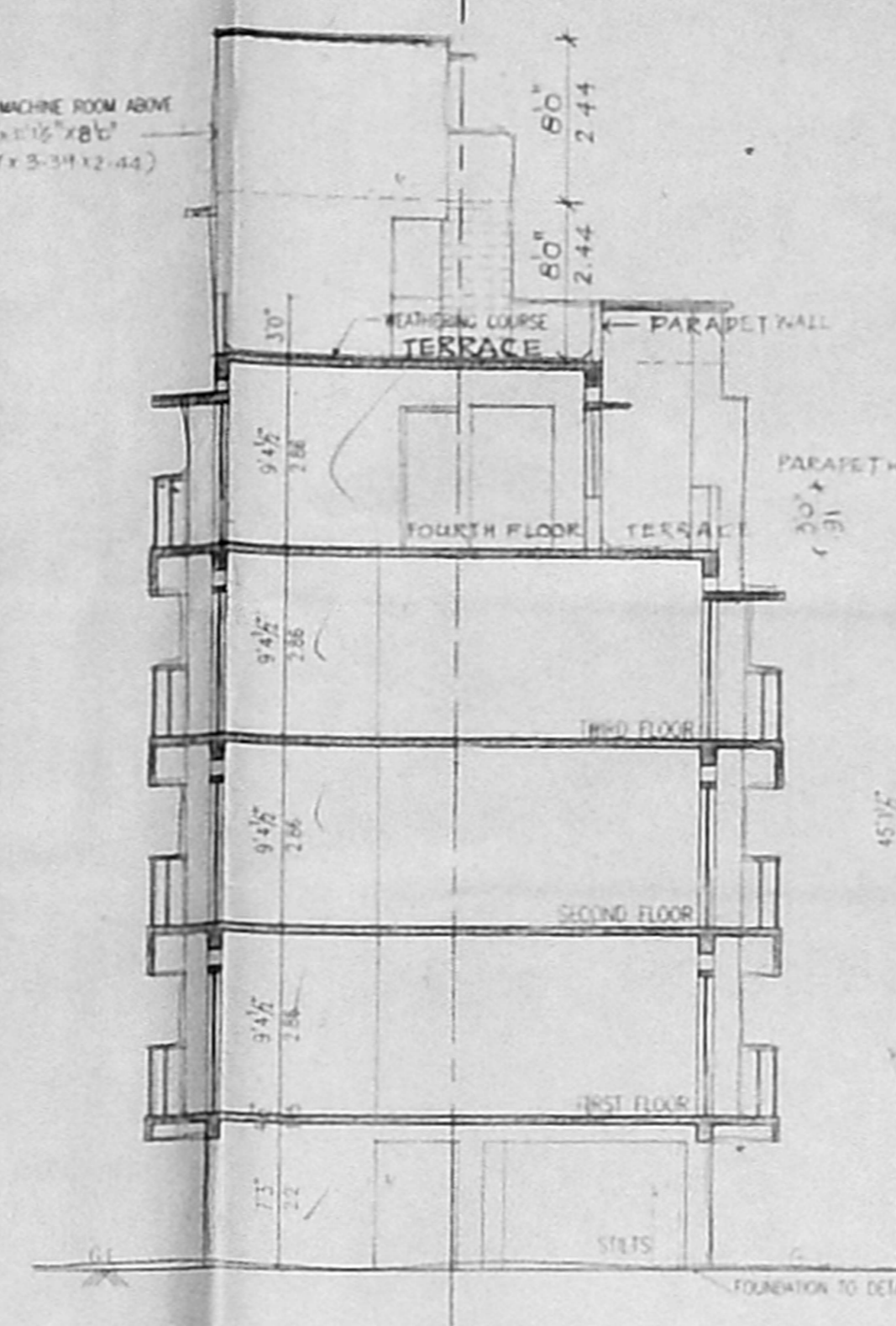
COLUMN FOUNDATION DETAIL



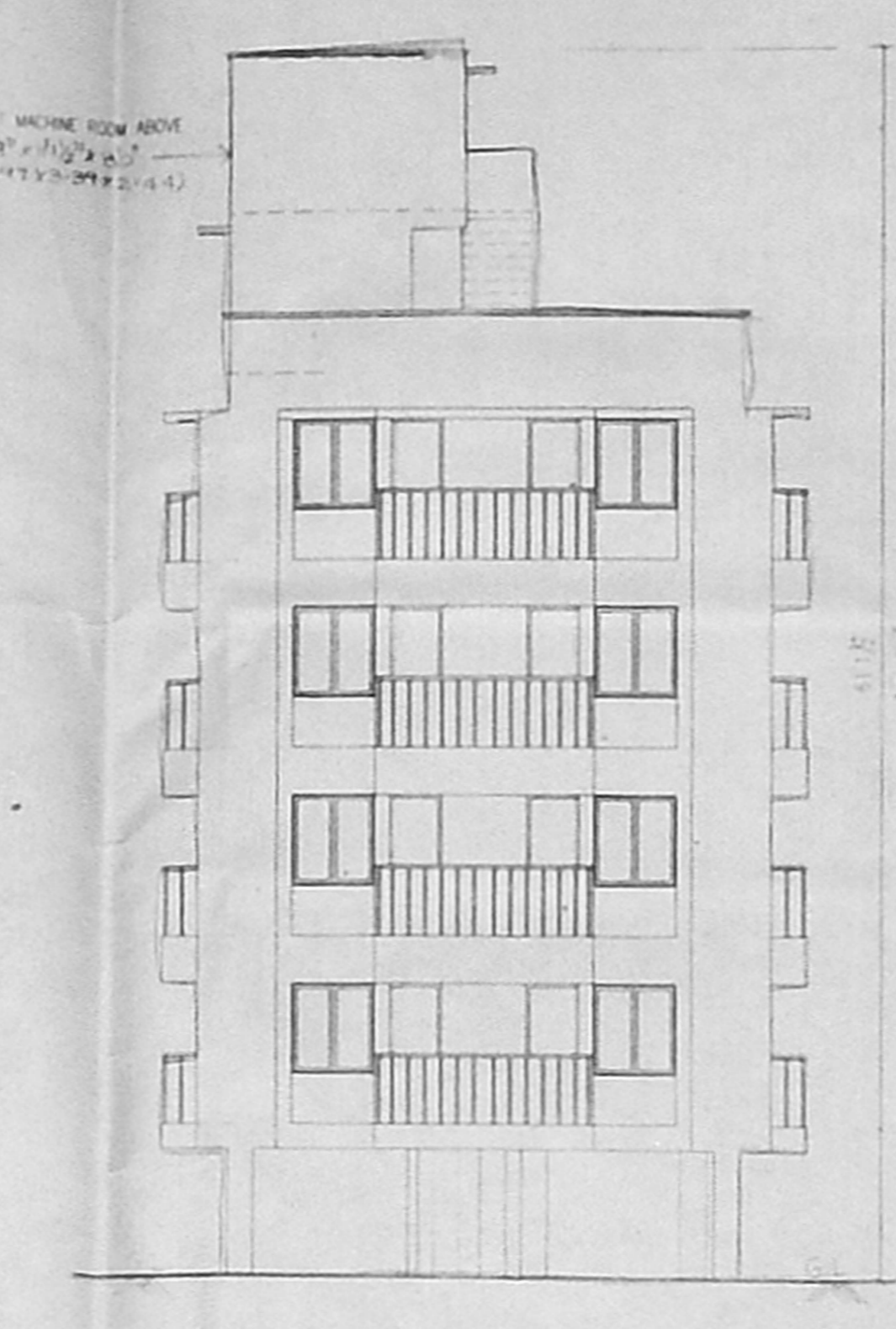
WELL DETAILS (HERMETICALLY SEALED)



SUMP DETAILS (SCIENTIFICALLY CLOSED)

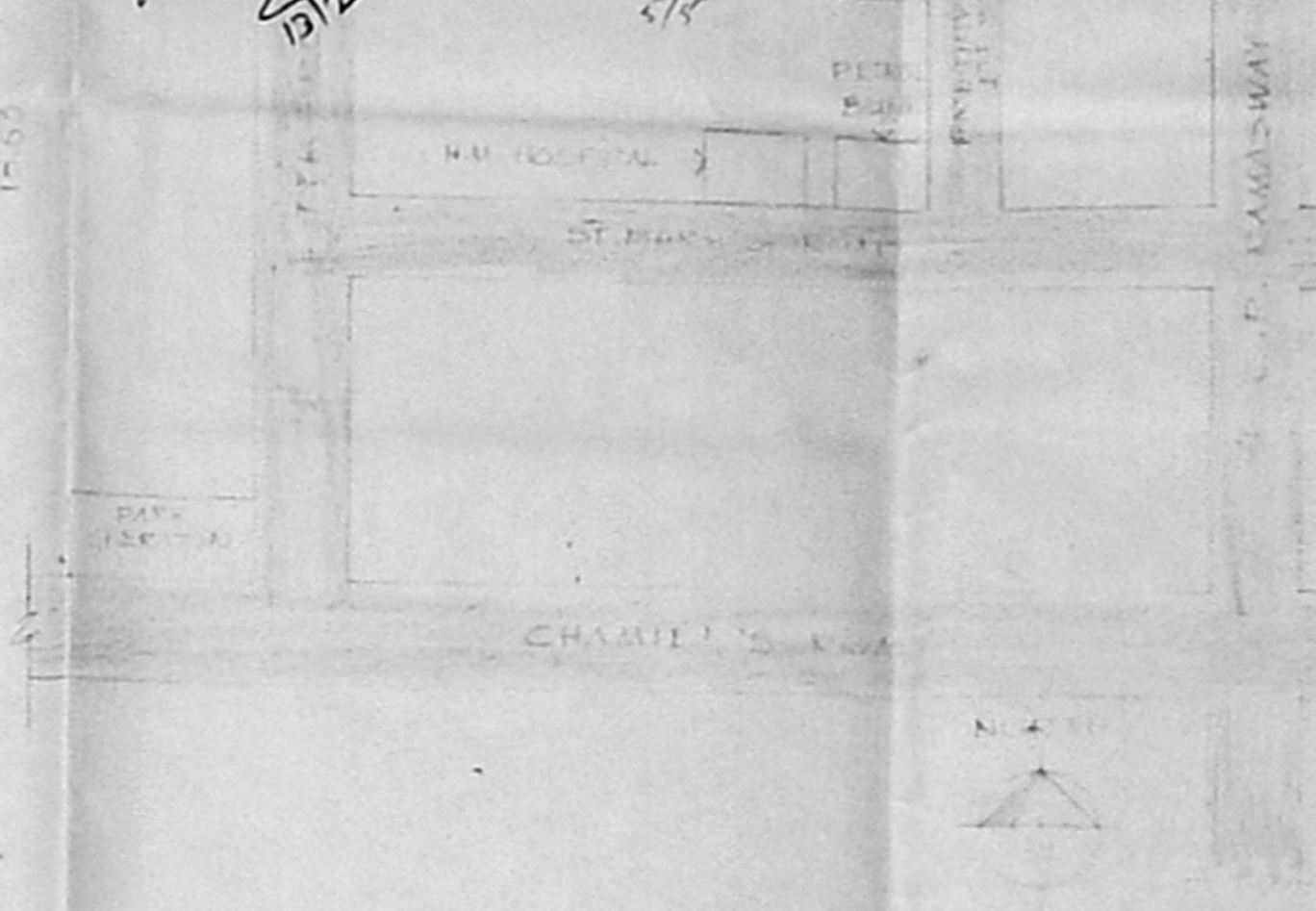


SECTION A-B



ELEVATION

OFFICE COPY
 Planning Permit No. 249/2002
 APPROVED
 SUBJECT TO THE CONDITIONS IN
 THIS OFFICE LETTER.
 C.No. 3005/2001
 Date: 2/2/2002
 FOR MEMBER SECRETARY,
 CHENNAI METROPOLITAN
 DEVELOPMENT AUTHORITY
 CHENNAI-600 008.



LEI PLAN



AREA DETAIL :

	SFT	SMTS
STILT FLOOR	246.18	22.88
FIRST FLOOR	2926.18	271.95
SECOND FLOOR	2926.18	271.95
THIRD FLOOR	2926.18	271.95
FOURTH FLOOR	2724.75	253.23
TOTAL AREA	11749.47	1091.76
SITE AREA	7878.00	731.88
F.F.I	1.497	
PLOT COVERAGE	27.12%	

- SPECIFICATION :
- * COLUMN FOOTING FOUNDATION LAID OVER THE SAND FILLING AND R.C.C. 1:4:8 MAT
 - * ALL COLUMNS ARE CONNECTED WITH PLINTHBEAM AND ROOFBEAM
 - * R.C.C. 1:4:8 LAID OVER THE SAND FILLING FOR MOSAIC FLOORING.
 - * BRICKWORK IN BASEMENT AND SUPERSTRUCTURE WITH C.M. 1:5 MIX
 - * R.C.C. 1:2:4 MIXED UNTEL LAID OVER THE DOORS, WINDOWS AND OPENINGS.
 - * ALL WALLS AND CEILINGS ARE PLASTERED WITH C.M. 1:5 MIX.
 - * JOINERY ARE MADE IN STEEL ARE FIRST CLASS TEAK WOOD.
 - * ROOF COVERED BY R.C.C. 1:2:4 MIXED FLAT SLAB
 - * PARAPET WALL LAID ALL OVER THE BUILDING
 - * WEATHERING COURSE LAID IN PROPER MIX AND SLOPE WITH WATER PROOFING COMPOUND

SCHEDULE OF JOINERY :

	(FT)	(MT)
M.D. - MAIN DOOR	3'6"X7'0"	1.07X2.13
F.D. - FRENCH DOOR	6'0"X7'0"	2.44X2.13
F.D.I. - FRENCH DOOR	6'0"X7'0"	1.83X2.13
D. - DOOR	3'0"X7'0"	0.91X2.13
D.I. - DOOR	2'6"X7'0"	0.76X2.13
W. - WINDOW	6'0"X4'0"	1.83X1.21
W.I. - WINDOW	6'0"X4'0"	1.83X1.21
W.2. - WINDOW	5'0"X4'0"	1.52X1.21
W.3. - WINDOW	5'0"X4'0"	1.52X1.21
W.4. - WINDOW	4'0"X4'0"	1.21X1.21
W.5. - WINDOW	3'0"X4'0"	0.91X1.21
W.6. - WINDOW	2'6"X4'0"	0.76X1.21
W.7. - WINDOW	2'6"X4'0"	0.76X1.21
W.8. - WINDOW	2'6"X4'0"	0.76X1.21
W.9. - WINDOW	2'6"X4'0"	0.76X1.21
W.10. - WINDOW	2'6"X4'0"	0.76X1.21
W.11. - WINDOW	2'6"X4'0"	0.76X1.21
W.12. - WINDOW	2'6"X4'0"	0.76X1.21
W.13. - WINDOW	2'6"X4'0"	0.76X1.21
W.14. - WINDOW	2'6"X4'0"	0.76X1.21
W.15. - WINDOW	2'6"X4'0"	0.76X1.21
W.16. - WINDOW	2'6"X4'0"	0.76X1.21
W.17. - WINDOW	2'6"X4'0"	0.76X1.21
W.18. - WINDOW	2'6"X4'0"	0.76X1.21
W.19. - WINDOW	2'6"X4'0"	0.76X1.21
W.20. - WINDOW	2'6"X4'0"	0.76X1.21
W.21. - WINDOW	2'6"X4'0"	0.76X1.21
W.22. - WINDOW	2'6"X4'0"	0.76X1.21
W.23. - WINDOW	2'6"X4'0"	0.76X1.21
W.24. - WINDOW	2'6"X4'0"	0.76X1.21
W.25. - WINDOW	2'6"X4'0"	0.76X1.21
W.26. - WINDOW	2'6"X4'0"	0.76X1.21
W.27. - WINDOW	2'6"X4'0"	0.76X1.21
W.28. - WINDOW	2'6"X4'0"	0.76X1.21
W.29. - WINDOW	2'6"X4'0"	0.76X1.21
W.30. - WINDOW	2'6"X4'0"	0.76X1.21

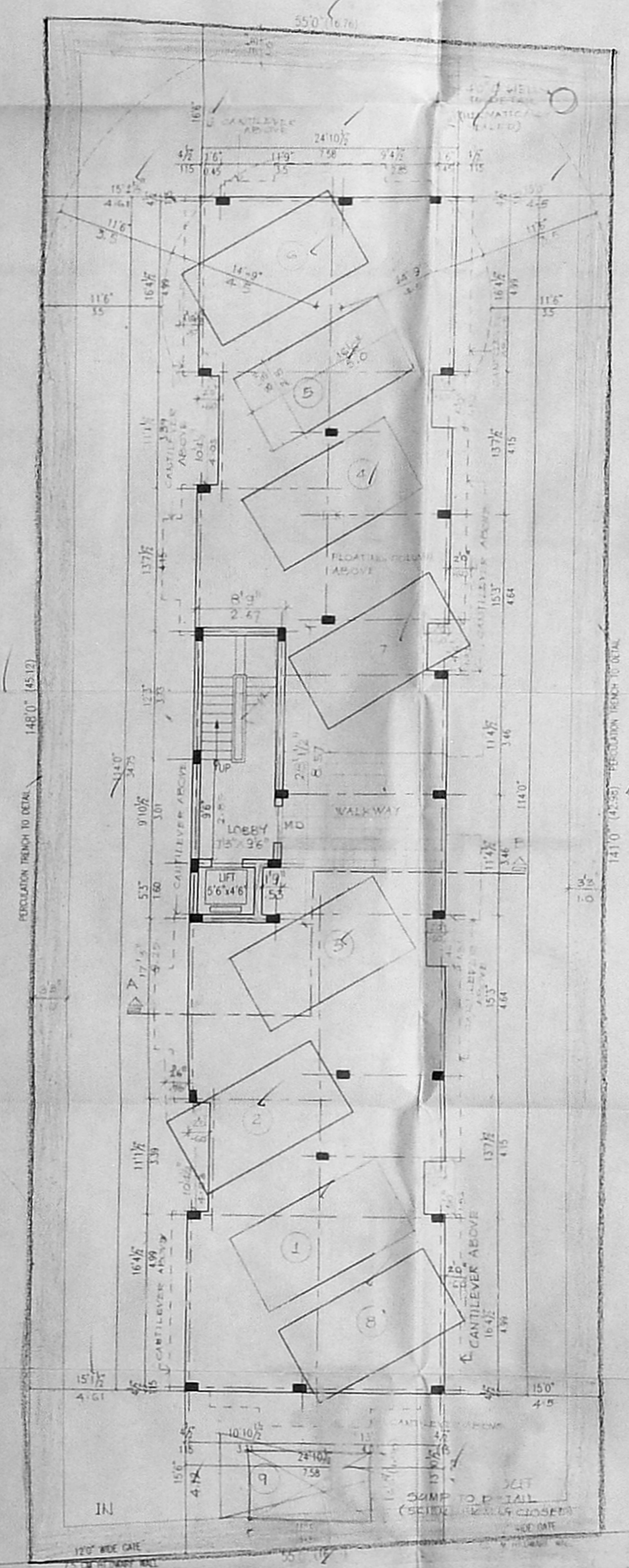
COLOUR INDEX :

PROPOSED BUILDING	[Symbol]
EXISTING ROAD	[Symbol]
SITE BOUNDARY	[Symbol]

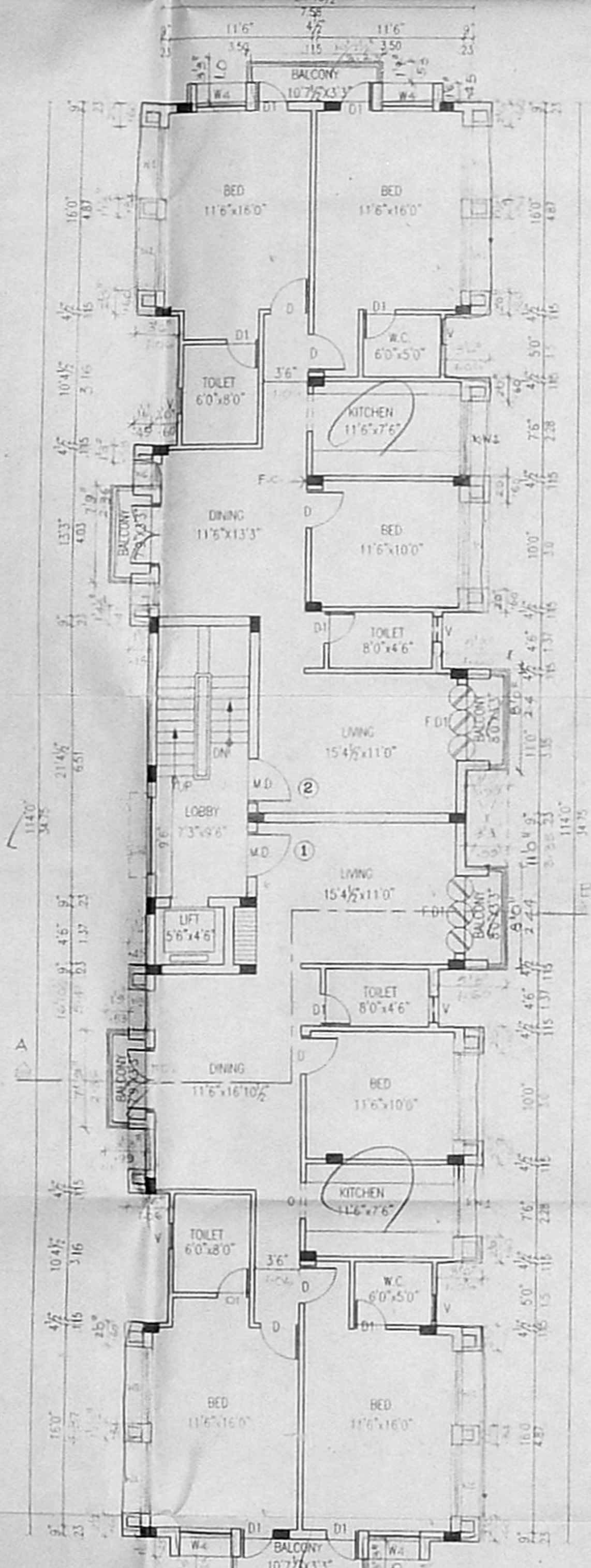
SCALE - 1"=8'0" (1:100) DATE - 28-8-2001

OWNER :
 S. Janaki

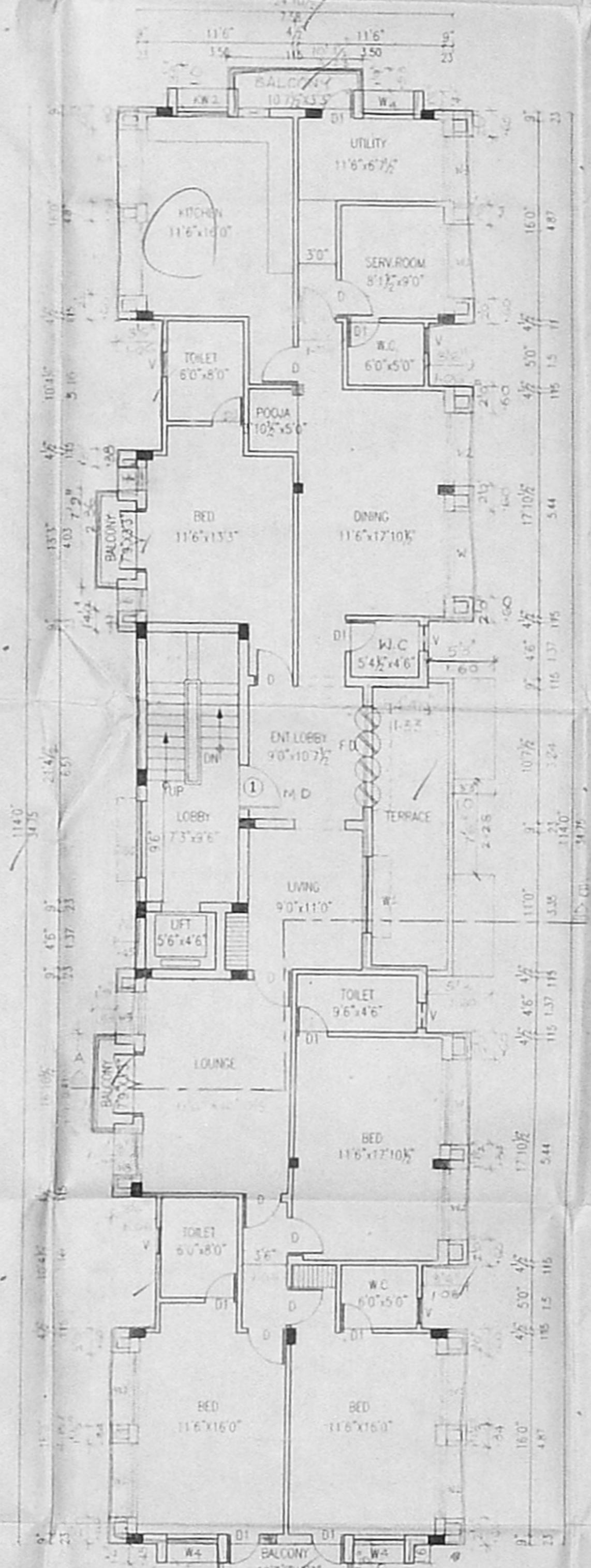
LICENSED SURVEYOR :
 S. Subba Rao, B. Arch. A.S.S.I.
 Registered Enrolment 33382
 COA REG. CAP: 2534
 Block II, Ground Floor,
 1, Kamalabhai Street,
 V. NAGAR, CHENNAI - 600 017



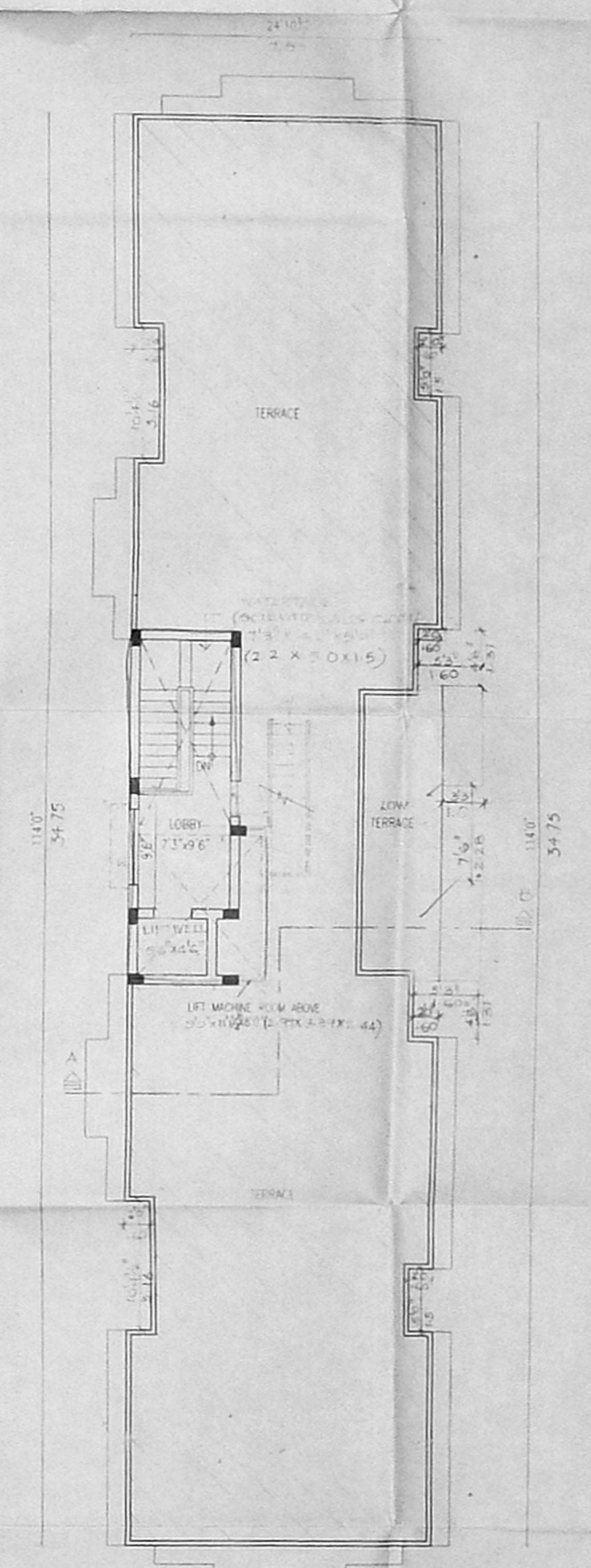
SITE CUM STAIR FLOOR PLAN



TYPICAL FLOOR PLAN (FIRST, SECOND AND THIRD FLOORS)



FOURTH FLOOR PLAN



TERRACE FLOOR PLAN